

Control Box

MD6C-M



Features

- ◆ MD6C-M is specially designed for medical applications. MD6C-M is equipped with Moteck **MoBus** system, which offers more flexibility and convenience. For example, it's able to connect with multiple controls with JB1 junction box. And it can be offered with different firmware for different control and panel definition, which enables you to program the proper software needed by various applications, yet with the same hardware structure.
- ◆ Main applications : medical
- ◆ Input voltage (Switching power supply) : 100~240V AC 50 / 60Hz
- ◆ Output voltage : 29V DC
- ◆ Overload protection current : 3.0~5.0A (each actuator independently)
- ◆ Max. number of actuators this control box can drive : 4
- ◆ Support joint-movement function.
- ◆ Duty cycle : 10% or 2 min continuous operation in 20 min.
- ◆ IP protection level : IPX5 (indoor use only)
- ◆ Color : light gray RAL7035
- ◆ Cable length : Straight 3000mm

Options

- ◆ C Clip : To fix MD6C-M onto MD60 or MD66 actuators.
- ◆ Bracket : An independent bracket is available if separate control box installation is preferred.



C Clip



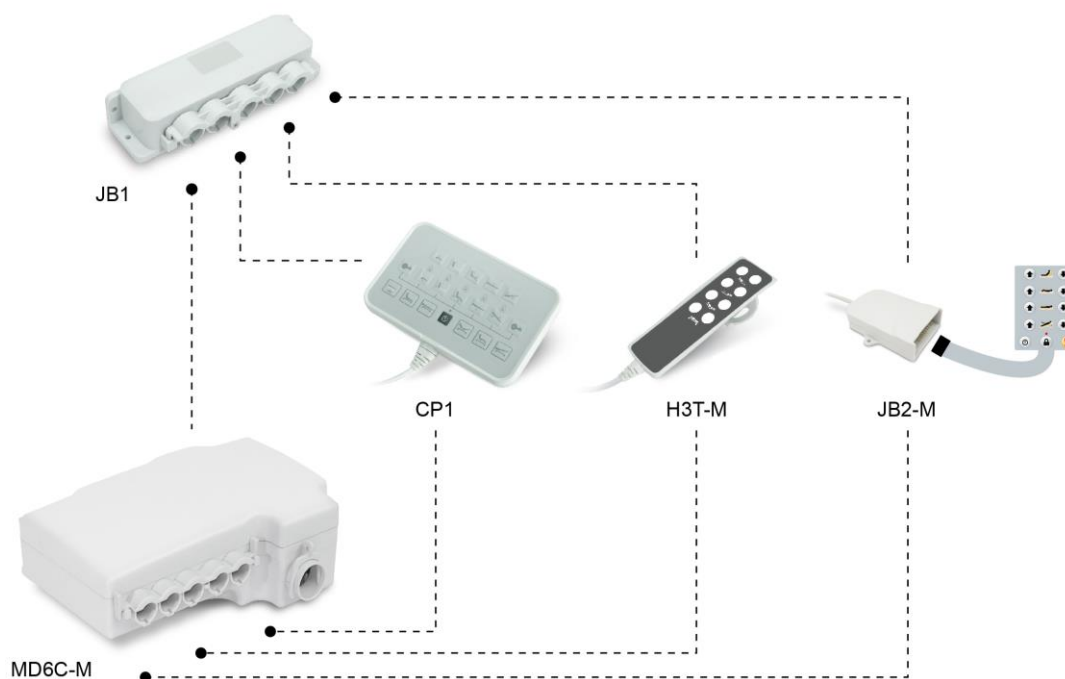
Bracket

Compatibility

1. Handset

MoBus protocol family : H3T-M, CP1

MoBus Family



2. Actuator

MD60 、 MD66 (With Moteck V type or H type DIN plug)

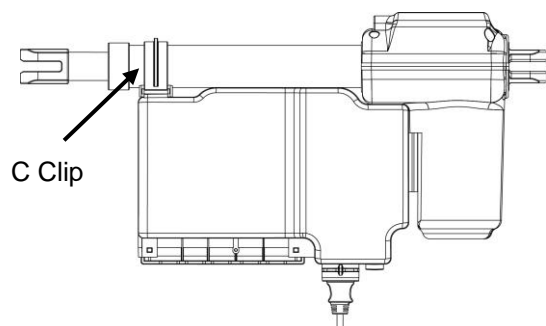


H type

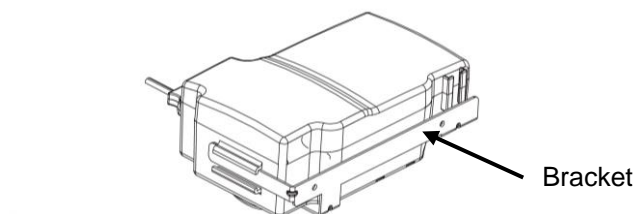


V type

- ◆ Fixed on MD60 or MD66 actuators with C Clip.



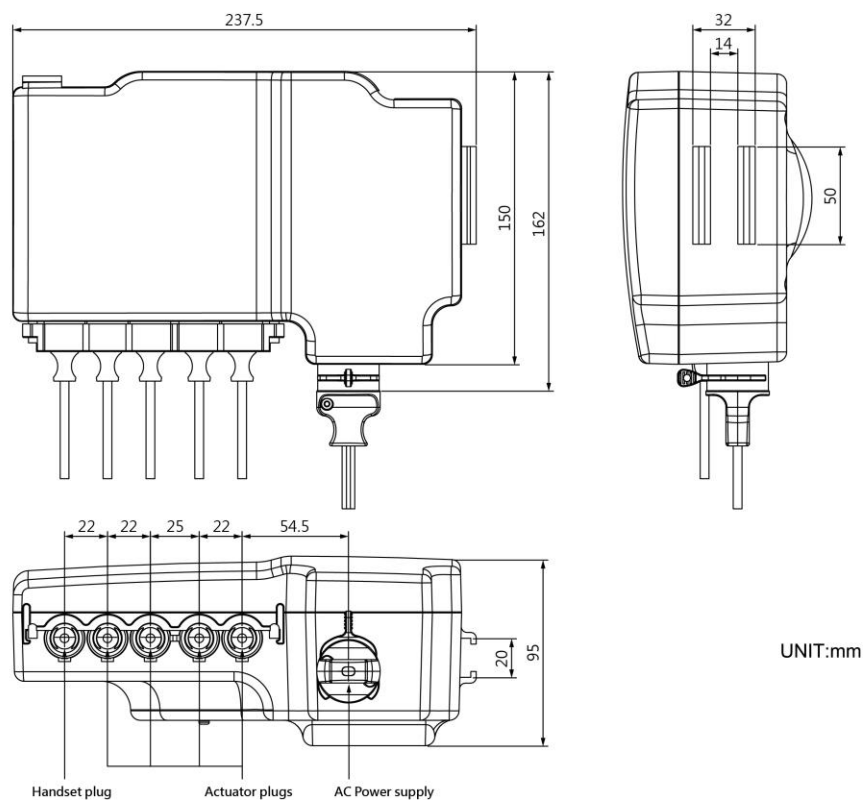
- ◆ With fixing bracket.



3. Accessory

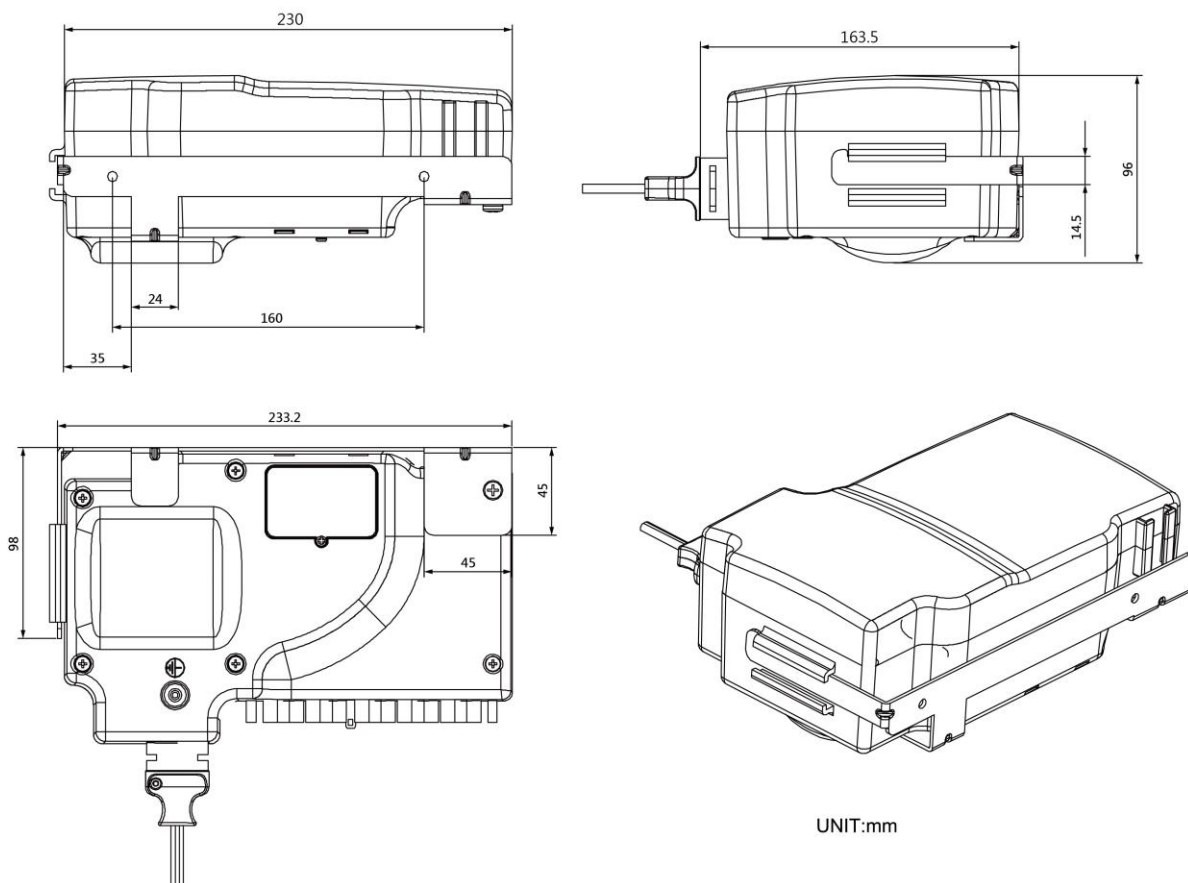
Junction Box : JB1, JB2-M

Dimensions



UNIT:mm

◆ With fixing bracket.



UNIT:mm

Ordering Key

MD6C - M - 24 - 1 - - 0 0

Output Voltage

24 : 24V DC

Handset Port

1 : for 1 handset DIN socket

Actuator Port

2 : for 2 actuator DIN sockets

3 : for 3 actuator DIN sockets

4 : for 4 actuator DIN sockets

Reserved

Options

0 : None

1 : C Clip to fix MD60 actuator

2 : C Clip to fix MD66 actuator

3 : Bracket

Reserved

Terms of Use

The user is responsible for determining the suitability of MOTECK products for specific applications. Due to continuous development in order to improve its products, MOTECK products are subject to frequent modifications and changes without prior notice. MOTECK reserves the right to discontinue the sale of any products displayed on its website or listed in its catalogue or other written materials drawn up by MOTECK.