

Control Box

CS2



Features

- ◆ CS2 is a compact control box which is able to drive up to 4 actuators. It is designed to be compatible with wide range of Moteck actuators and handsets. It should be used with external switching mode power supply (SMPS). There are 3 different types, TSW1, TSW2 and TSW3 available for customer to choose.
- ◆ Main applications : furniture , home care
- ◆ Input voltage : 29V DC
- ◆ Output voltage : 29V DC
- ◆ Overload protection current : 3A (for each actuator independently)
- ◆ Max. number of actuators this control box can drive : 4
- ◆ Support joint-movement function
- ◆ Duty cycle : 10% or 2 min continuous operation in 20 min.
- ◆ Color : Black
- ◆ Certified : EN55014-1, EN55014-2
- ◆ Cable type and length : DC power wire, straight 1000mm.

Options

- ◆ Mounting plate to fix on flat surface by screws
- ◆ C-Clip to fix on FD60 actuator



Mounting plate



CS2 fixed on FD60 actuator

Compatibility

1. Handset

(1) Wired

P1 communication Type: HA,HC,HD, HE, HF, HJ, HI, HM, H2D, H2N, H3F, H3N, H3NT

(2) Wireless

TXH, TXT

2. Actuator

FD60, FD50, FD20, GD70, BD60, BDF60, BDN60, LD2, LD3, LD10, LD20

3. Accessory

(1) RF 2.4G receiver :

TXA

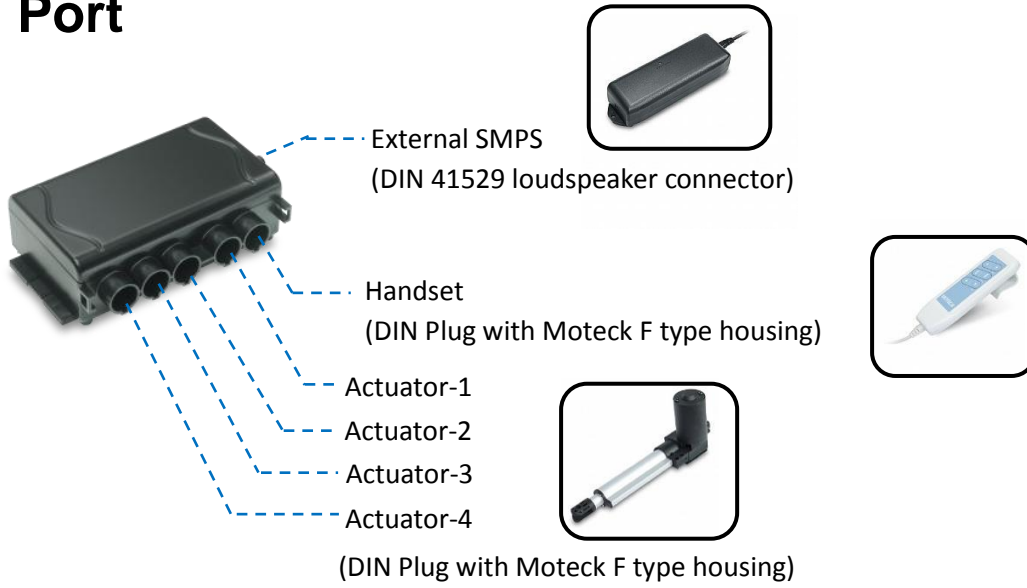
(2) Bluetooth receiver :

TBA

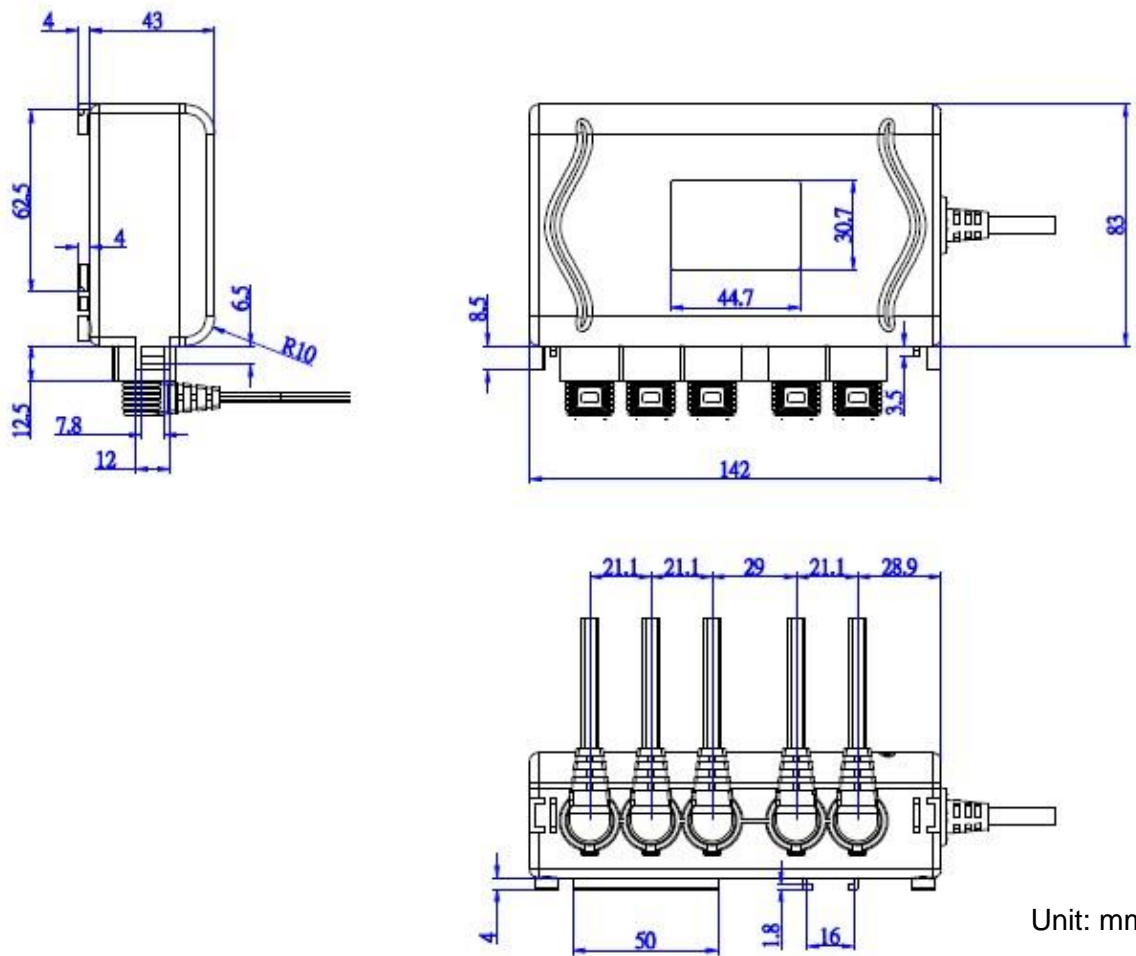
(3) Switch Mode Power Supply(SMPS) :

TSW1,TSW2,TSW3

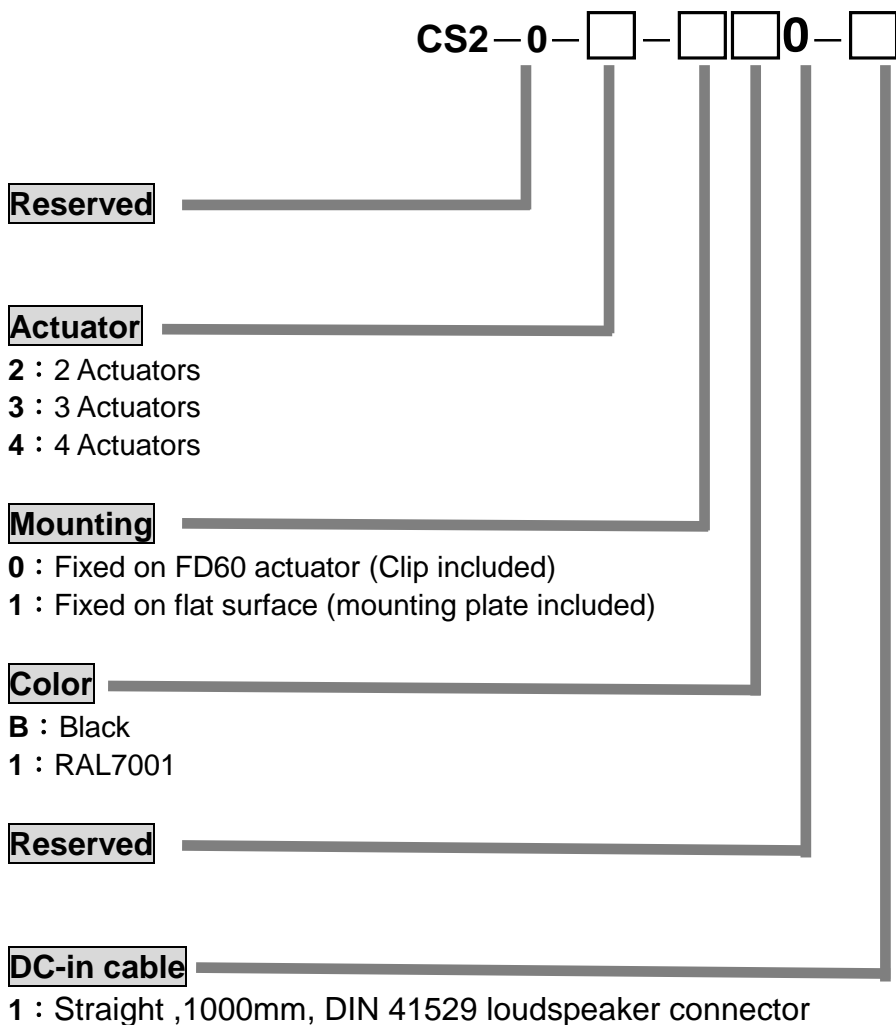
I/O Port



Dimensions



Ordering Key



Terms of Use

The user is responsible for determining the suitability of MOTECK products for specific applications. Due to continuous development in order to improve its products, MOTECK products are subject to frequent modifications and changes without prior notice. MOTECK reserves the right to discontinue the sale of any products displayed on its website or listed in its catalogue or other written materials drawn up by MOTECK.