

Desk Lifting Column DKL3

DKL3 is a 3-part built-in actuator for electric lifting leg. Customers can integrate DKL3 into square or round tube on demand to create exclusive lifting table. The outstanding mechanical transmission design provides quiet, smooth, and rapid movements. And the 3-part mechanism makes DKL3 not only short retracted dimensions but long stroke length.

Feature

- Main applications: Furniture
- Input voltage: 24V DC
- Max. push load: 800N
- Dimensions: 80(W) x 150(D) x 553 ~ 1203(H) mm
- Max. current: 3.5A @ 24V DC
- Max. speed: 40 mm/sec
- Stroke: 650 mm
- Duty cycle: 10%, max. 1 min. continuous operation in 10 min.
- Ambient operation temperature: -20°C ~ +65°C
- Hall effect sensor positioning feedback
- IP Protection level: IP20
- Color: Black
- Noise Level: ≤ 50 dB
- Certified: CE Marking EMC Directive 2014/53/EU
- Number of operation: More than 10,000 times under full load.

Option

- Cable length: 335, 500, 1000 mm

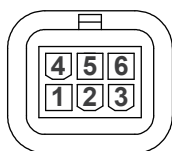


Compatibility

Prouduct	Model	Cable plug
Control box	DKC3	* Minifit 6-pin Moteck L1 type

* Remark:

Minifit 6-pin: Connected Pin 6 (M+) to "+" & Pin 3 (M-) to "-" of DC power, the actuator will extend.



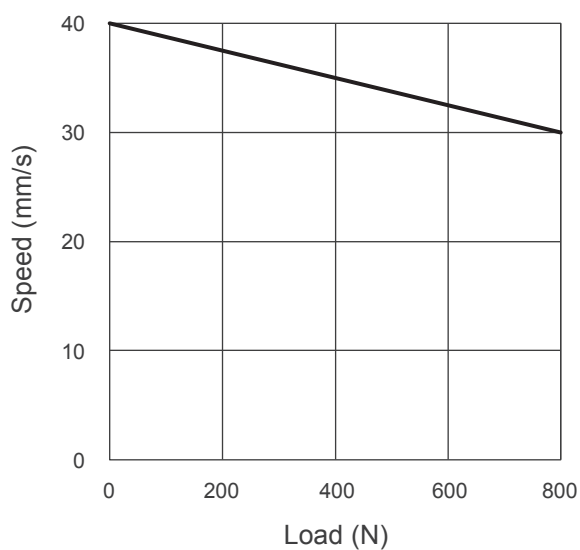
Pin assignments

Pin No.	Pin definition
1	GND
2	VCC
3	M-
4	Data2
5	Data1
6	M+

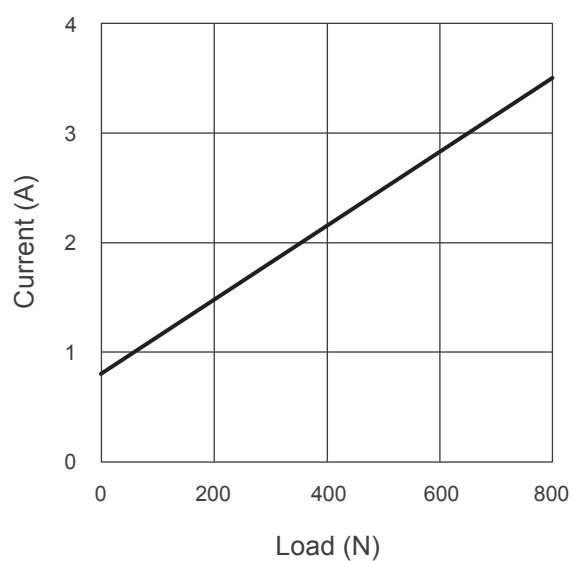
Performance Data

Model No.	Max. push load (N)	Typical speed (mm/s)		Typical current (A) @ 24V	
		No load	Full load	No load	Full load
DKL3	800	40	30	0.8	3.5

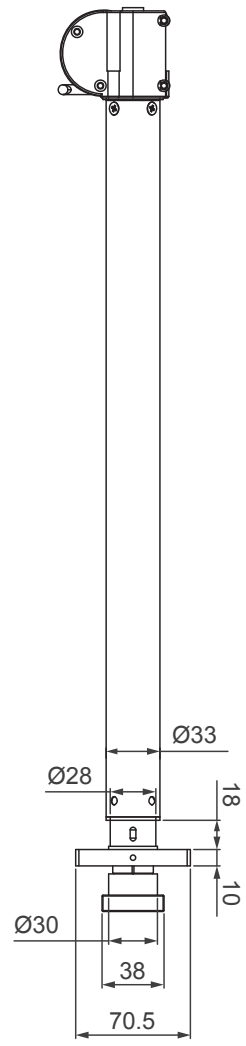
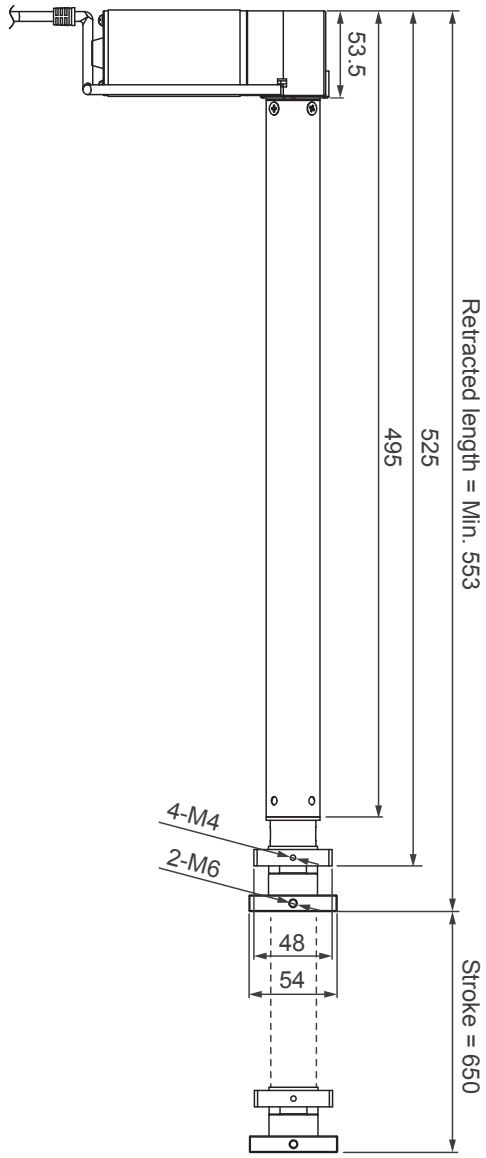
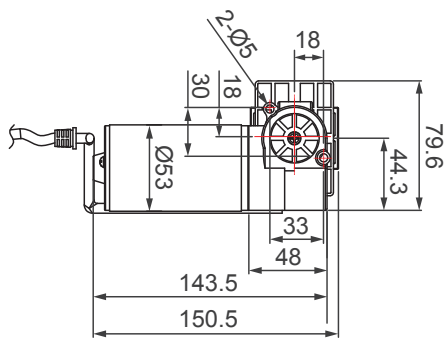
Speed vs. Load



Current vs. Load



Dimensions



Unit: mm