

Foot Switch

FS1



Features

- ◆ FS1 is designed for homecare and medical applications which can work well with Moteck standard control box and double motor, such as T Control, CS1, CBT2 and CB2P.
- ◆ Main applications : homecare, medical
- ◆ Max. number of motors this foot switch can drive : 1
- ◆ Available number of buttons : 2
- ◆ Housing appearance & color : Light Gray (RAL 7035)
- ◆ Cable type and length : total 880mm long with 420mm spiral cable
- ◆ IP66

Option


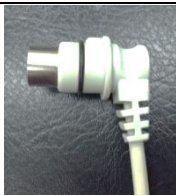

◆ Color : Black

Compatibility

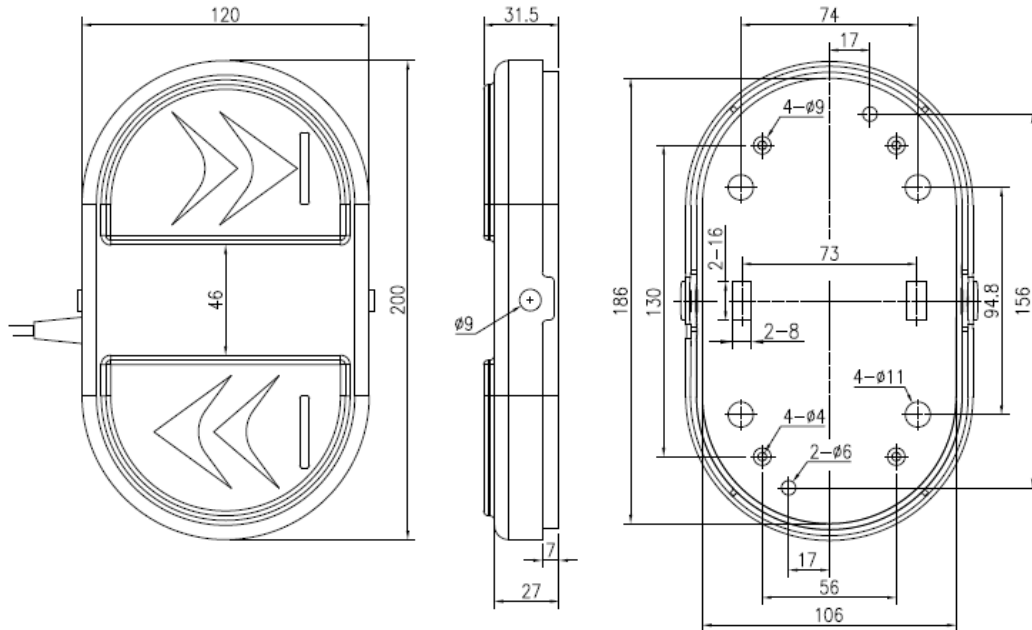
1. Control box

Motek P1 Communication Type: T Control, CS1, CBT2, CB2P

2. Available housing type of plug

	F type	V type	H type
			
T Control	✓		
CBT2	✓		
CB2P		✓	✓
CS1	✓		

Dimensions



Unit: mm

Ordering Key

FS1-□-□

Color

- 0 : Standard—Light Gray (RAL 7035)
- 1 : Black

Cable

- 0 : Standard (880mm / Spiral 420mm)
- 1 : Straight 2000 mm
- 2 : Straight 750 mm

Terms of Use

The user is responsible for determining the suitability of MOTECK products for specific applications. Due to continuous development in order to improve its products, MOTECK products are subject to frequent modifications and changes without prior notice. MOTECK reserves the right to discontinue the sale of any products displayed on its website or listed in its catalogue or other written materials drawn up by MOTECK.