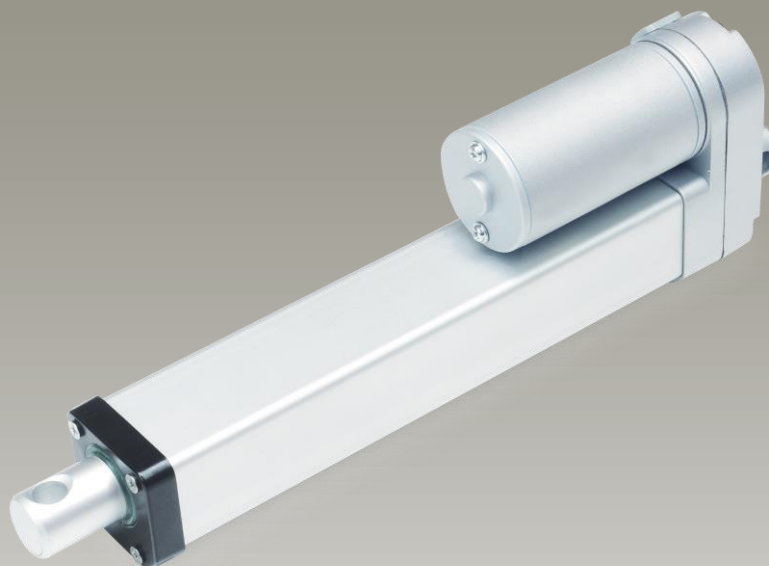


Actuator

LD36



Features

- ◆ LD36 is a compact actuator with IP66 protection level, suitable for various applications with limited installation space, such as window opener, adjustable car driver seat, and other outdoor applications.
- ◆ Main applications : Industrial, furniture
- ◆ Input voltage : 24V DC / 12V DC
- ◆ Max. load : 1200N (push/pull)
- ◆ Max. current : 3.5 A @ 12V DC
- ◆ Max. speed : 44 mm/sec @ no load
- ◆ Stroke : 50~300 mm
- ◆ Duty cycle : 20%, max. 2 min continuous operation
- ◆ IP protection level : IPX6, IPX9K
- ◆ Color : Aluminum grey
- ◆ Noise level : ≤ 70 dB
- ◆ Preset limit switches
- ◆ Ambient operating temperature : -10°C~40°C

Option

- ◆ Mounting bracket



Mounting bracket

Compatibility

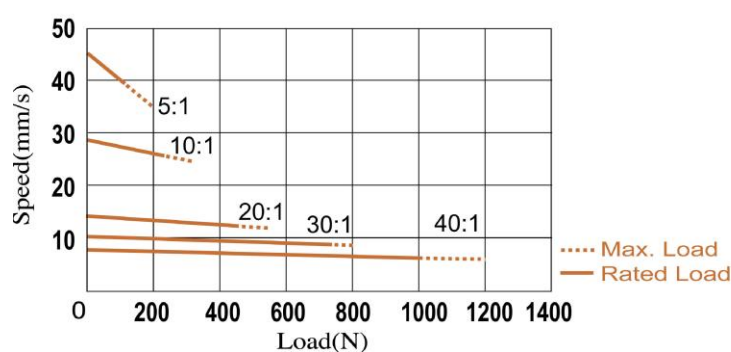
- ◆ **Control Box**

T-Control, CS1, CB3T, CB4M, CBT2

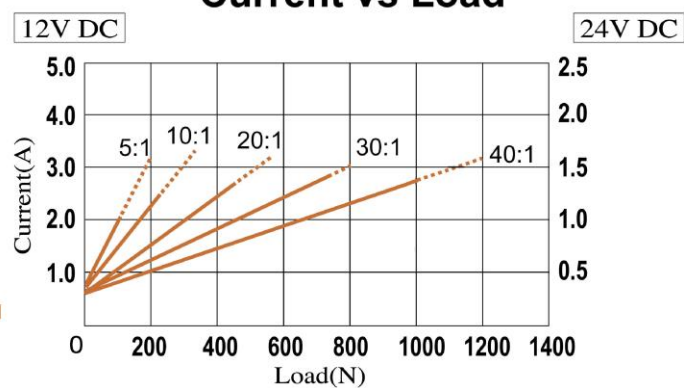
Performance Data

Model	Push/Pull Max. (N)	Speed (mm/s)		Current (A)			
		No load	Full load	No load		Full load	
				12V	24V	12V	24V
LD36-XX-05-XXX.XXX-XX0X	150	43.9	40.0	0.8	0.4	2.0	1.0
LD36-XX-10-XXX.XXX-XX0X	250	27.6	26.0	0.8	0.4	2.4	1.2
LD36-XX-20-XXX.XXX-XX0X	500	14.6	13.5	0.8	0.4	2.6	1.3
LD36-XX-30-XXX.XXX-XX0X	800	9.5	9.1	0.8	0.4	2.9	1.5
LD36-XX-40-XXX.XXX-XX0X	1000	7.0	6.5	0.8	0.4	2.8	1.4

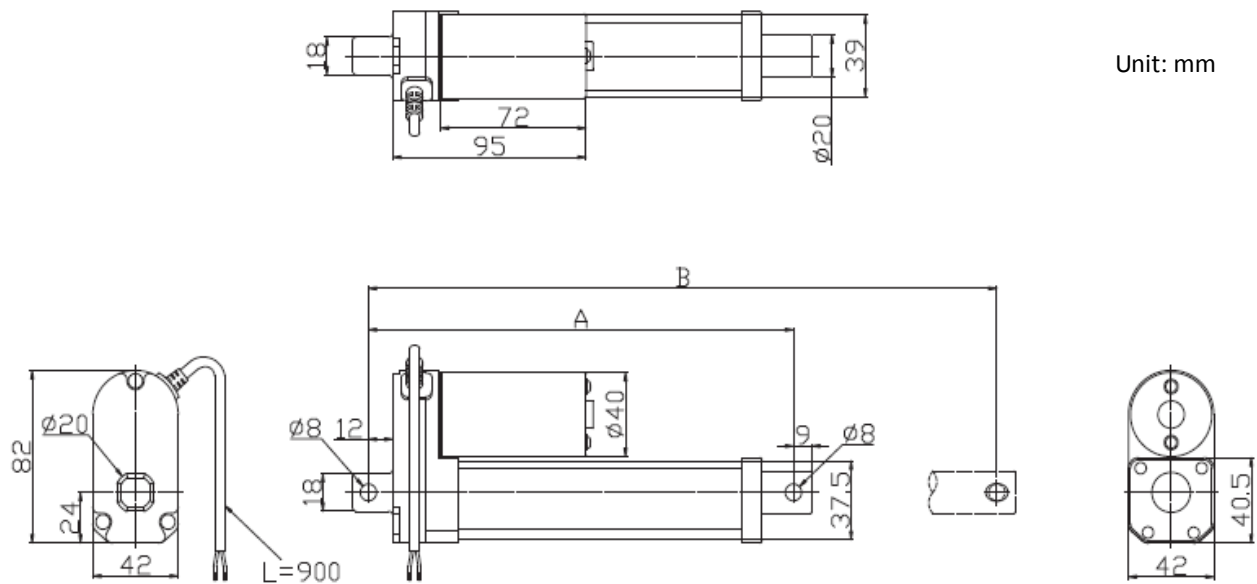
Speed vs Load



Current vs Load



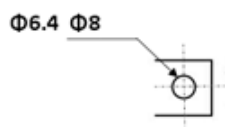
Dimensions



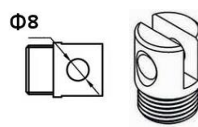
◆ Available Length

Options of front connectors	Min. retracted length (A)
1. Drilled hole	$A \geq S + 108$
2. Plastic	$A \geq S + 108$
3. Spherical rod eye	$A \geq S + 149$

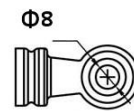
◆ Front Connector



1. Drilled hole



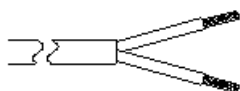
2. Plastic



3. Spherical rod eye

Wiring

When Red (M+) is connected to “+” and Black (M-) is connected to “-” of DC power, the actuator will extend.



Color	Definition
Red	M+
Black	M-

Ordering key

LD36-□□-□□-□□□.□□□□-□□□□

Input Voltage

12 : 12V

24 : 24V

Gear Ratio

05 : 5:1

10 : 10:1

20 : 20:1

30 : 30:1

40 : 40:1

Retracted Length

(Refer to the Dimension paragraph)

Extended Length

(Refer to the Dimension paragraph)

Front Connector

1 : Drilled hole (Φ6.4/Φ8)

2 : Plastic (Φ8)

3 : Spherical rod eye (Φ8)

Rear Connector

0 : 0° Drilled hole (Φ6.4/Φ8) (Refer to drawing of Dimension paragraph)

9 : Turn 90° Drilled hole (Φ6.4/Φ8)

Option

0 : Without mounting bracket

B : With mounting bracket

Wire Length

0 : 900mm

1 : 1500mm

2 : 2000mm

Terms of Use

The user is responsible for determining the suitability of MOTECK products for specific applications. Due to continuous development in order to improve its products, MOTECK products are subject to frequent modifications and changes without prior notice. MOTECK reserves the right to discontinue the sale of any products displayed on its website or listed in its catalogue or other written materials drawn up by MOTECK.