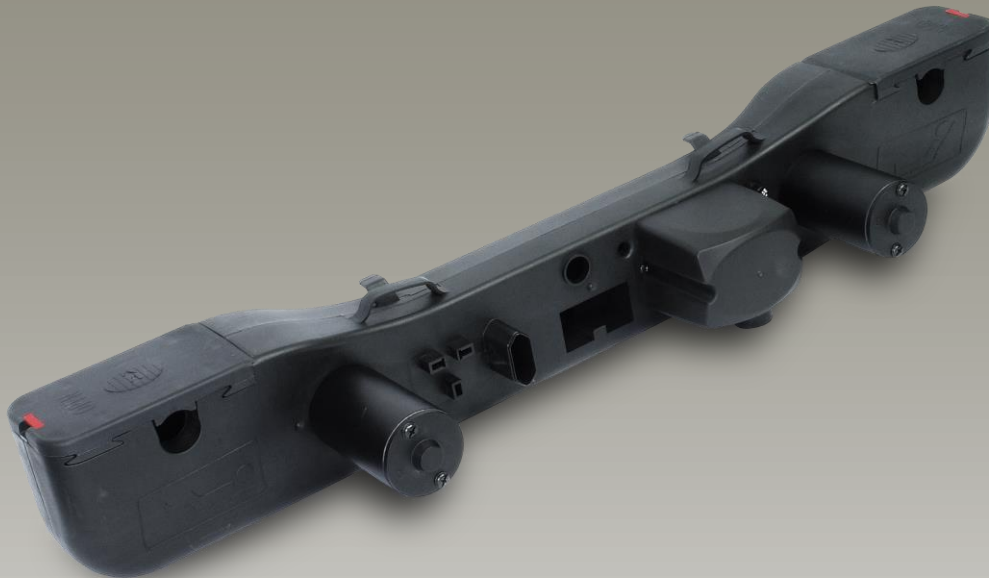


# Double Motor – Twinmat III TW42



## Features

- ◆ TW42 features its high force, low built-in height and compact motors with low noise level, which is suitable for adjustable home and medical beds. It is designed with Motek owned patent listed. With a surface mounting fuse holder, it is easy to replace the fuse.
- ◆ Main applications : furniture, medical
- ◆ Input voltage : 100V AC / 120V AC / 220V AC / 230V AC / 240V AC / ISW1
- ◆ Output voltage : 24V DC / 3A
- ◆ Max. load : 2x4500N
- ◆ Max. speed : 5mm/sec @ no load
- ◆ Stroke : 29~87mm (±2mm)
- ◆ Overload protection current : 3A, each motor
- ◆ Duty cycle : 10% or 2 min continuous operation in 20 min.
- ◆ IP protection level : IP43
- ◆ Protection class : Class II
- ◆ Cable : Straight 3000mm
- ◆ Color : Black
- ◆ Certified : EN55014, EN61000, EN60335, EN62233
- ◆ Backup batteries : 9V DC x 2

## Options

- ◆ Internal switching mode power supply (ISW1)
- ◆ Color : Light gray (RAL 7035)

## Compatibility

### Handset :

#### (1) Wired :

HC, HD, HF, H3F, HI, HM, H2N, H3N, HT

#### (2) Wireless :

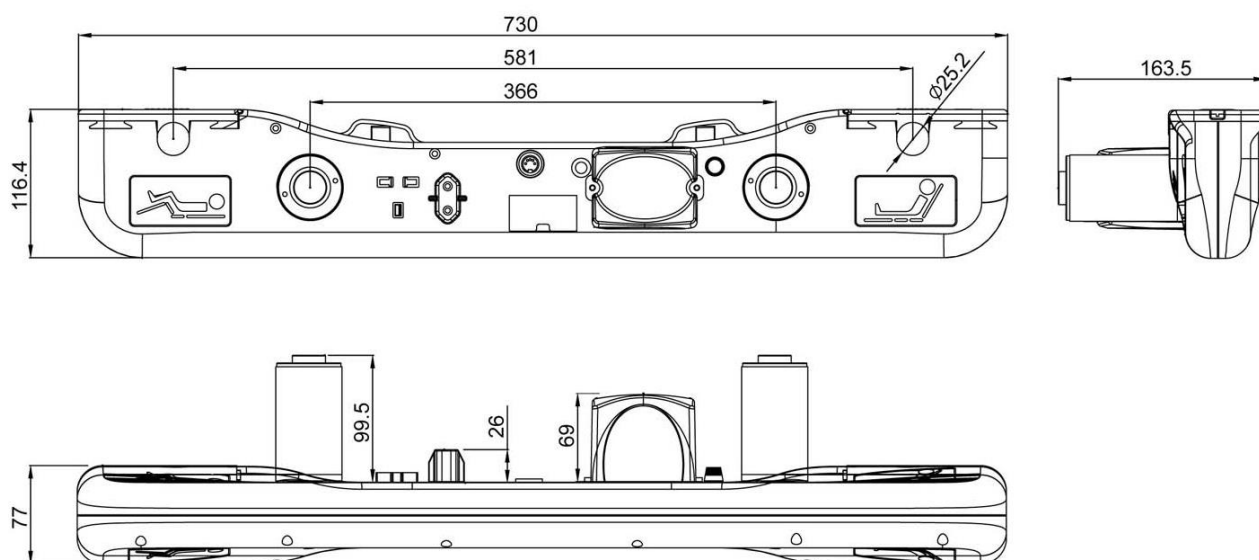
TXH, TXT (with TXA adapter)

(DIN plug with Moteck A type housing)



A type plug housing

## Dimension



Unit: mm

# Ordering Key

TW42—     —   •   — 1 — 2

## Input Voltage

100 : 100V AC

120: 120V AC

220 : 220V AC

230 : 230V AC

240 : 240V AC

ISW1 : ISW1

## Stroke for Back

29~87mm

## Stroke for Leg

29~87mm

## Socket for Handset

1 : 1 socket

## Number of Driver

2 : 2 motors

### Terms of Use

The user is responsible for determining the suitability of MOTECK products for specific applications. Due to continuous development in order to improve its products, MOTECK products are subject to frequent modifications and changes without prior notice. MOTECK reserves the right to discontinue the sale of any products displayed on its website or listed in its catalogue or other written materials drawn up by MOTECK.

MO-FAM-3-T-002-141218A