

# Massage Motor

## VM01



## Features

- ◆ VM01 massage motor is an optional accessory for Moteck control unit, such as double motor - Twinmat II (TW41/TW61). With the built-in PTC thermistor, VM01 will turn off automatically while overheated. There are two types of fixtures available for customers to choose, which makes it able to be assembled in various applications easily.
- ◆ Main applications : furniture
- ◆ Input voltage : 24V DC / 12V DC
- ◆ Max. current : 0.5A @ 24V DC
- ◆ Motor speed : 3500 rpm
- ◆ Duty cycle : 10% or 30 min continuous operation in 300 min.
- ◆ Lifetime : 600 hours
- ◆ Color : black
- ◆ Built-in thermal protection
- ◆ Cable length : 2000mm straight cable

## Options

- ◆ Fixture for board / Fixture for slat

## Compatibility

### 1. Handset

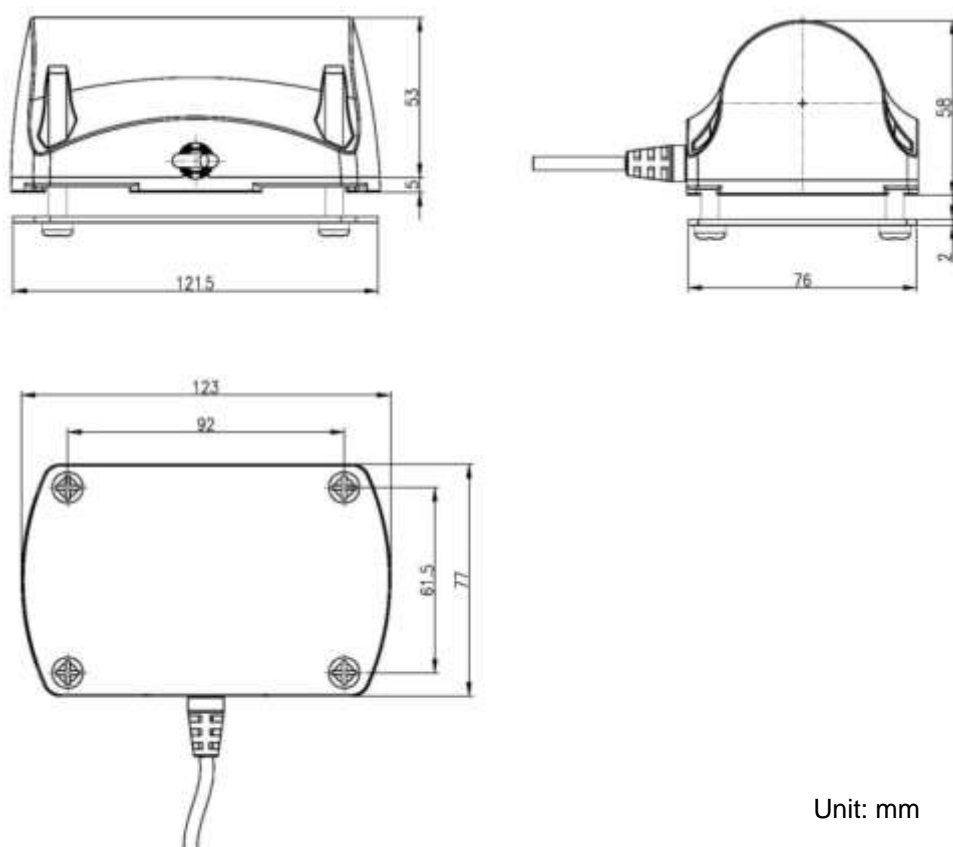
TXH5 wireless RF remote handset & TXA5 RF receiver

### 2. Double Motor

Twinmat II (TW41/TW61)

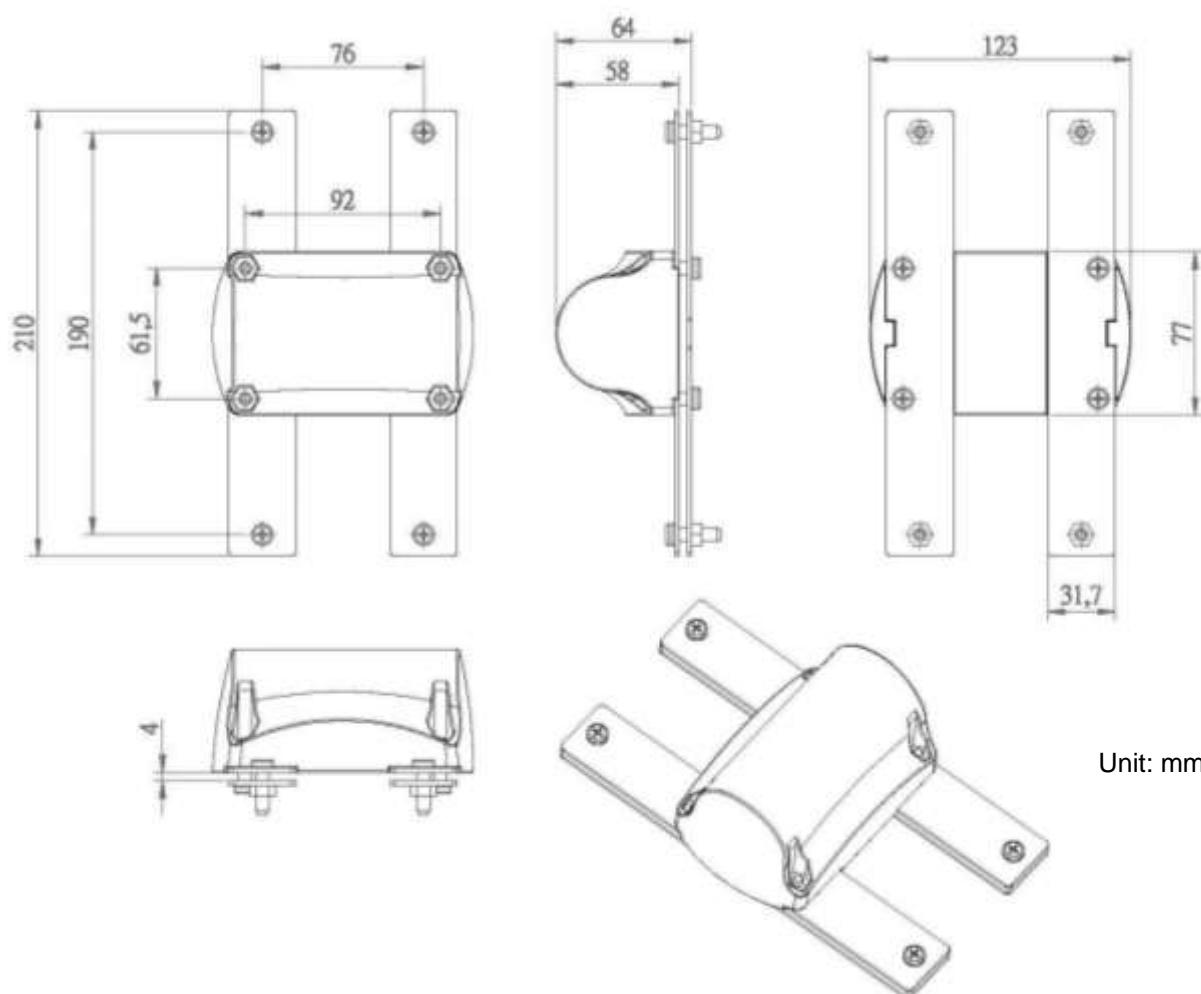
## Dimension

### 1. With fixture for board (standard)

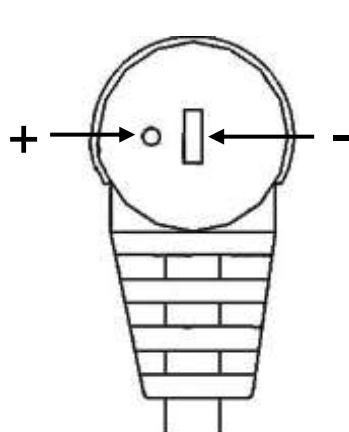


Unit: mm

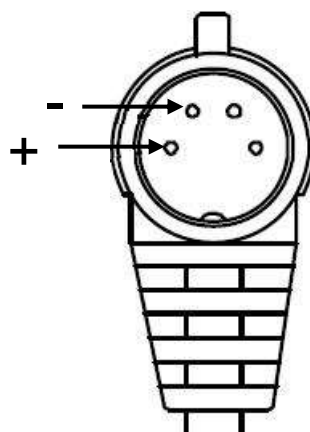
## 2. With fixture for slat



## Pin Definition

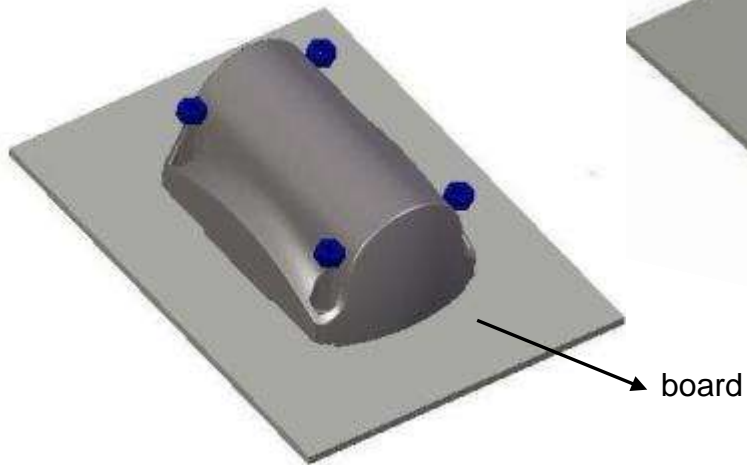


DIN Plug, 2-pin

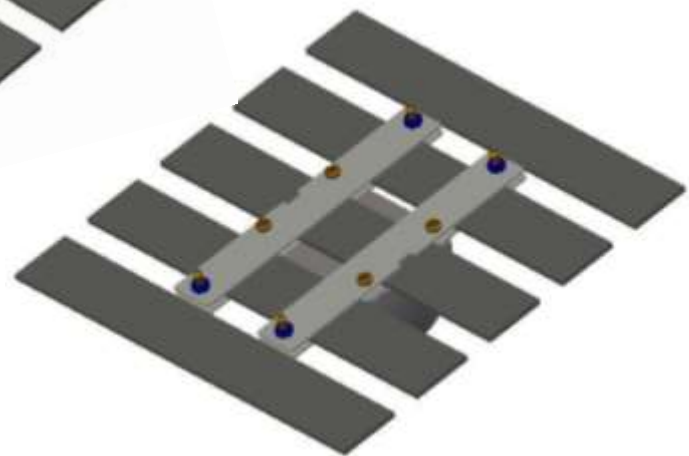
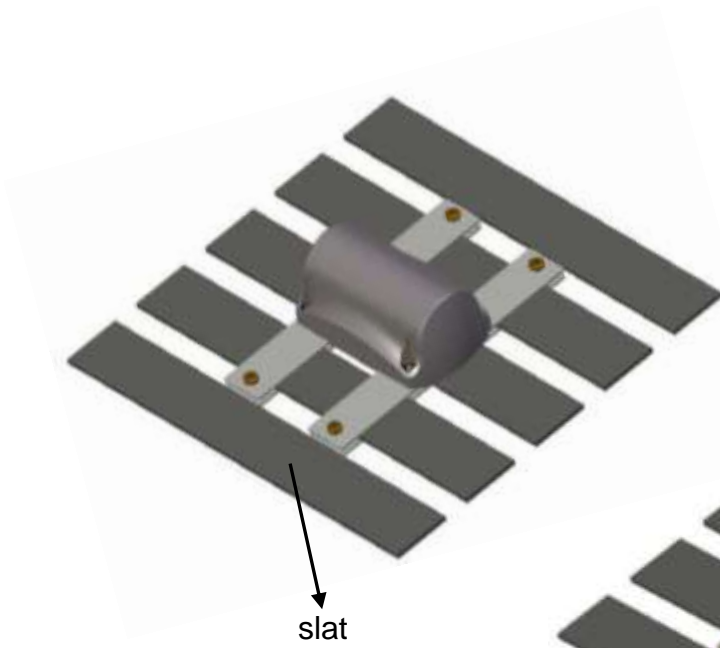


DIN Plug, 4-pin

# Installation Diagram



Fixture for board



Fixture for slat

# Ordering Key

VM01———

## Input Voltage

24 : 24V DC (default)

12 : 12V DC

## Cable Length

2 : 2000mm Straight cable (default)

3 : 3000mm Straight cable

X : Customized

## Plug type

1 : DIN 41529 loudspeaker plug (2pin)

2 : DIN Plug (4pin)

X : Customized

## Option

1 : Fixture for board (default)

2 : Fixture for slat

### Terms of Use

The user is responsible for determining the suitability of MOTECK products for specific applications. Due to continuous development in order to improve its products, MOTECK products are subject to frequent modifications and changes without prior notice. MOTECK reserves the right to discontinue the sale of any products displayed on its website or listed in its catalogue or other written materials drawn up by MOTECK.

MO-FAM-2-T-012-150129A