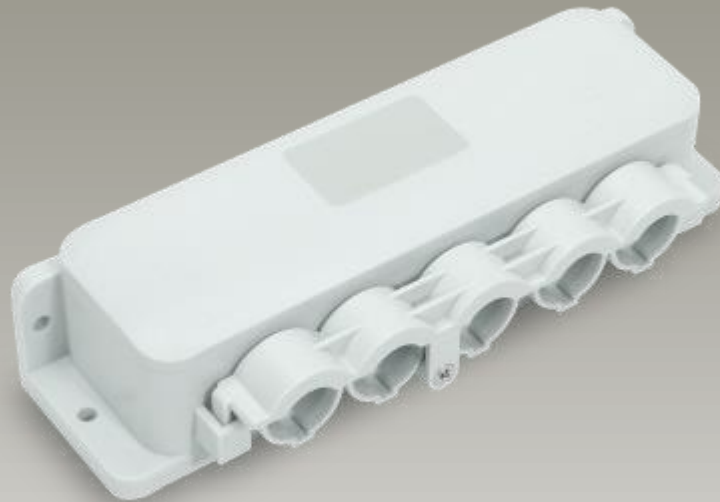


# Junction Box

## JB1



## Features

- ◆ JB1 is designed for medical and homecare applications which use more than 2 handsets in the system. It works with Moteck **MoBus** system, allowing up to 4 additional connections for accessories with **MoBus** function, such as handset and attendant control.
- ◆ Main applications : homecare, medical
- ◆ IP protection level : IPX5 (indoor use only)
- ◆ Color : light gray RAL7035
- ◆ Cable : An independent 750mm straight cable, with DIN connectors on both ends.

# Compatibility

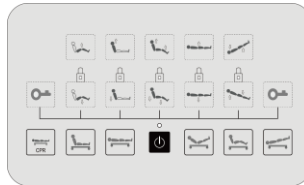
## 1. Handset

MoBus communication type :

H3T-M



CP1



## 2. Control Box

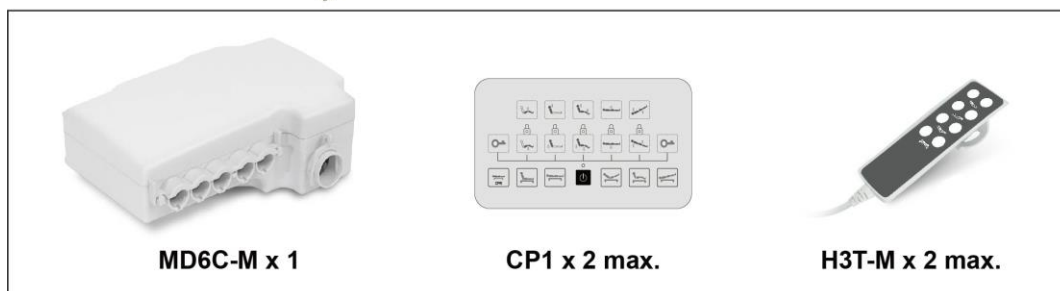
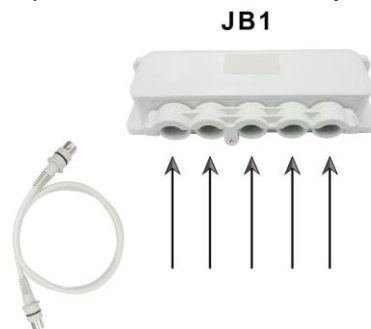
MoBus communication type :

MD6C-M



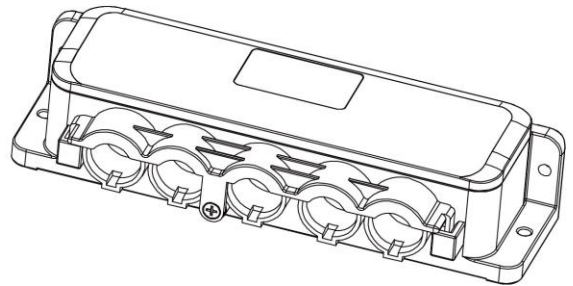
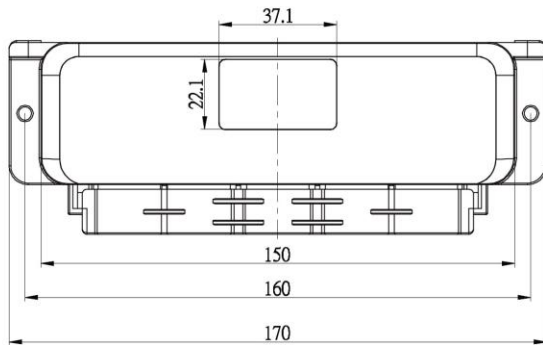
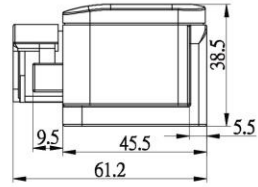
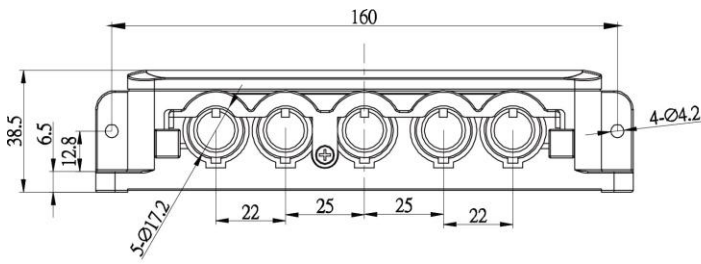
# Application

The below diagram explains how to extend your accessories through JB1.

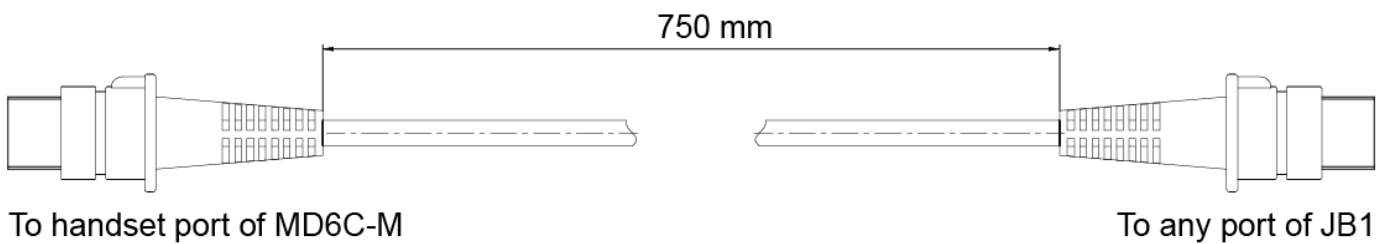


\* You can connect either of the above items to any port on JB1.

# Dimensions



Unit: mm



## Terms of Use

The user is responsible for determining the suitability of MOTECK products for specific applications. Due to continuous development in order to improve its products, MOTECK products are subject to frequent modifications and changes without prior notice. MOTECK reserves the right to discontinue the sale of any products displayed on its website or listed in its catalogue or other written materials drawn up by MOTECK.

MO-FAM-4-T-005-1.0